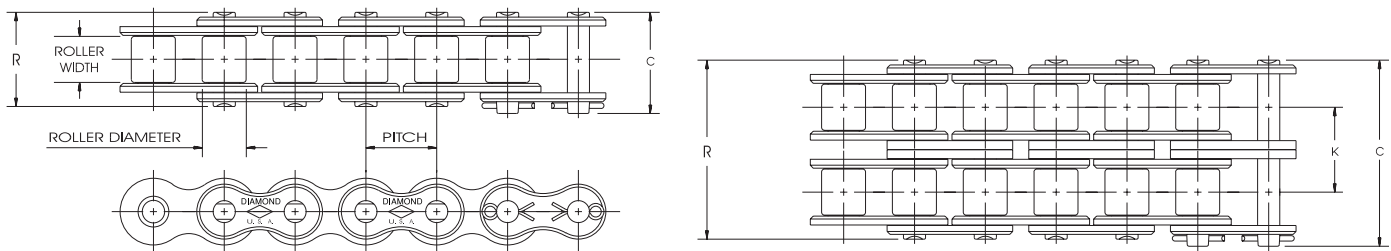


HEAVY SERIES CHAIN

Chain Descriptions and Dimensions

Heavy Series Chain

Heavy Series chains, also built in accordance with ASME/ANSI B29.1, are designed using link plate material from the next larger size chain. Heavy Series chains are not necessarily stronger than Standard Series chains, but the thicker link plate material provides an increase in fatigue resistance for those drives subjected to heavy shock loads, multiple stops/starts or reversing.



Dimensions in Inches and Pounds

ASME/ANSI Number	Pitch Inches	Roller Width	Roller Diameter	Pin Diameter	Link Plate Thickness	C	R	K	Weight Per Foot	Average Tensile Strength
60H	3/4	1/2	.469	.234	.125	1.24	1.17	1.18	8500
60H-2	3/4	1/2	.469	.234	.125	2.27	2.20	1.028	2.33	17000
60H-3	3/4	1/2	.469	.234	.125	3.31	3.24	1.028	3.47	25500
60H-4	3/4	1/2	.469	.234	.125	4.34	4.26	1.028	4.61	34000
80H	1	5/8	.625	.312	.156	1.57	1.45	2.02	14500
80H-2	1	5/8	.625	.312	.156	2.84	2.72	1.283	3.93	29000
80H-3	1	5/8	.625	.312	.156	4.14	4.02	1.283	5.92	43500
80H-4	1	5/8	.625	.312	.156	5.42	5.30	1.283	7.87	58000
100H	1 1/4	3/4	.750	.375	.187	1.86	1.74	2.82	24000
100H-2	1 1/4	3/4	.750	.375	.187	3.41	3.28	1.539	5.58	48000
100H-3	1 1/4	3/4	.750	.375	.187	4.95	4.82	1.539	8.32	72000
100H-4	1 1/4	3/4	.750	.375	.187	6.49	6.37	1.539	11.04	96000
120H	1 1/2	1	.875	.437	.219	2.27	2.13	4.08	34000
120H-2	1 1/2	1	.875	.437	.219	4.20	4.06	1.924	8.04	68000
120H-3	1 1/2	1	.875	.437	.219	6.13	5.99	1.924	11.99	102000
120H-4	1 1/2	1	.875	.437	.219	8.06	7.92	1.924	15.94	136000
120H-6	1 1/2	1	.875	.437	.219	11.91	11.77	1.924	23.84	204000
140H	1 3/4	1	1.000	.500	.250	2.44	2.28	5.40	46000
140H-2	1 3/4	1	1.000	.500	.250	4.50	4.34	2.055	10.65	92000
140H-3	1 3/4	1	1.000	.500	.250	6.56	6.39	2.055	15.90	138000
140H-4	1 3/4	1	1.000	.500	.250	8.62	8.45	2.055	21.10	184000
160H	2	1 1/4	1.125	.562	.281	2.86	2.68	7.03	58000
160H-2	2	1 1/4	1.125	.562	.281	5.30	5.12	2.436	13.88	116000
160H-3	2	1 1/4	1.125	.562	.281	7.75	7.56	2.436	20.68	174000
160H-4	2	1 1/4	1.125	.562	.281	10.17	10.00	2.436	27.62	232000
180H	2 1/4	1 13/32	1.406	.687	.312	3.28	3.01	9.59	76000
180H-2	2 1/4	1 13/32	1.406	.687	.312	6.00	5.73	2.723	18.86	152000
180H-3	2 1/4	1 13/32	1.406	.687	.312	8.73	8.46	2.723	28.14	228000
200H	2 1/2	1 1/2	1.562	.781	.375	3.71	3.39	13.38	110000
200H-2	2 1/2	1 1/2	1.562	.781	.375	6.79	6.48	3.083	26.38	220000
200H-3	2 1/2	1 1/2	1.562	.781	.375	9.88	9.56	3.083	40.85	330000
240H	3	1 7/8	1.875	.937	.500	4.85	4.35	...	21.08	157600

ASME/ANSI 60 and larger chains are available as cottered or riveted type design. Multiple strand chains are available with slip-fit (standard) or press-fit center plates.