

Service Data

Vickers®

Transmissions



Double Transmission Pump Package

TA1919V1010(P)-21



△ Included in 920220 Seal Kit

▲ Included in 920222 Seal Kit

■ Included in 923936 Rotating Group Kit

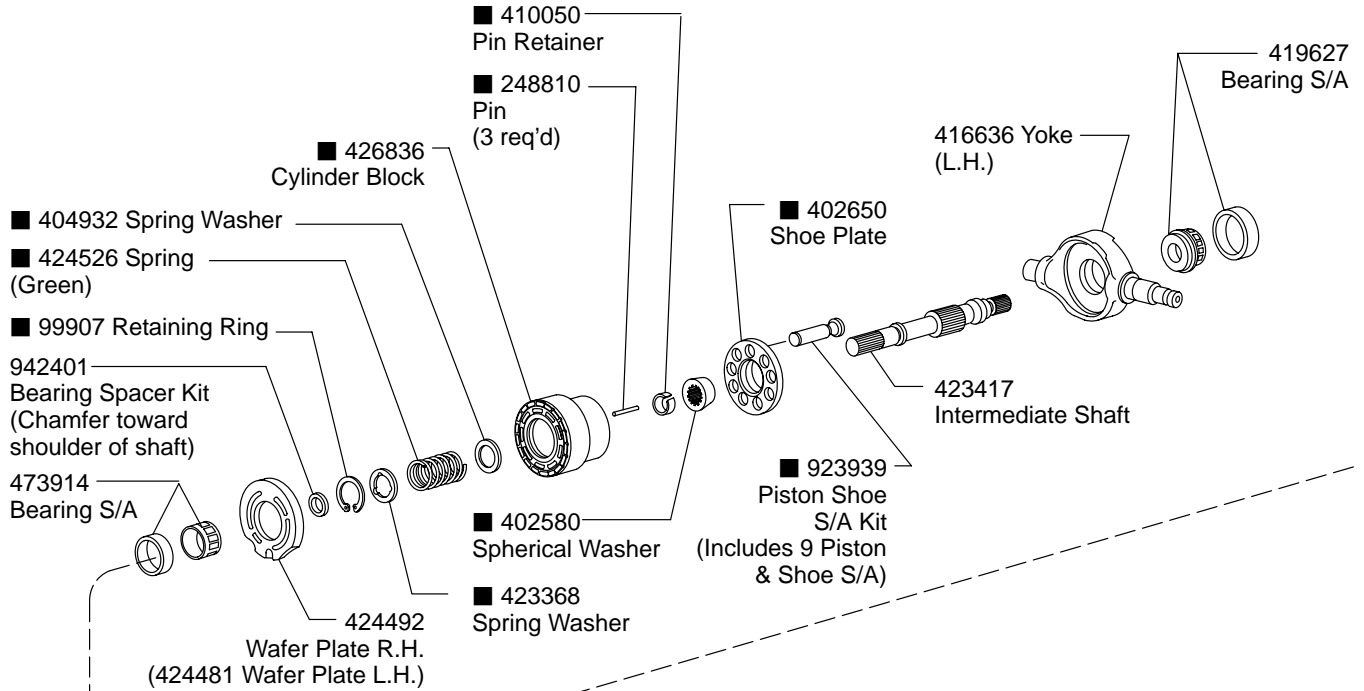
Note

Bearing preload at assembly shown on M2835S

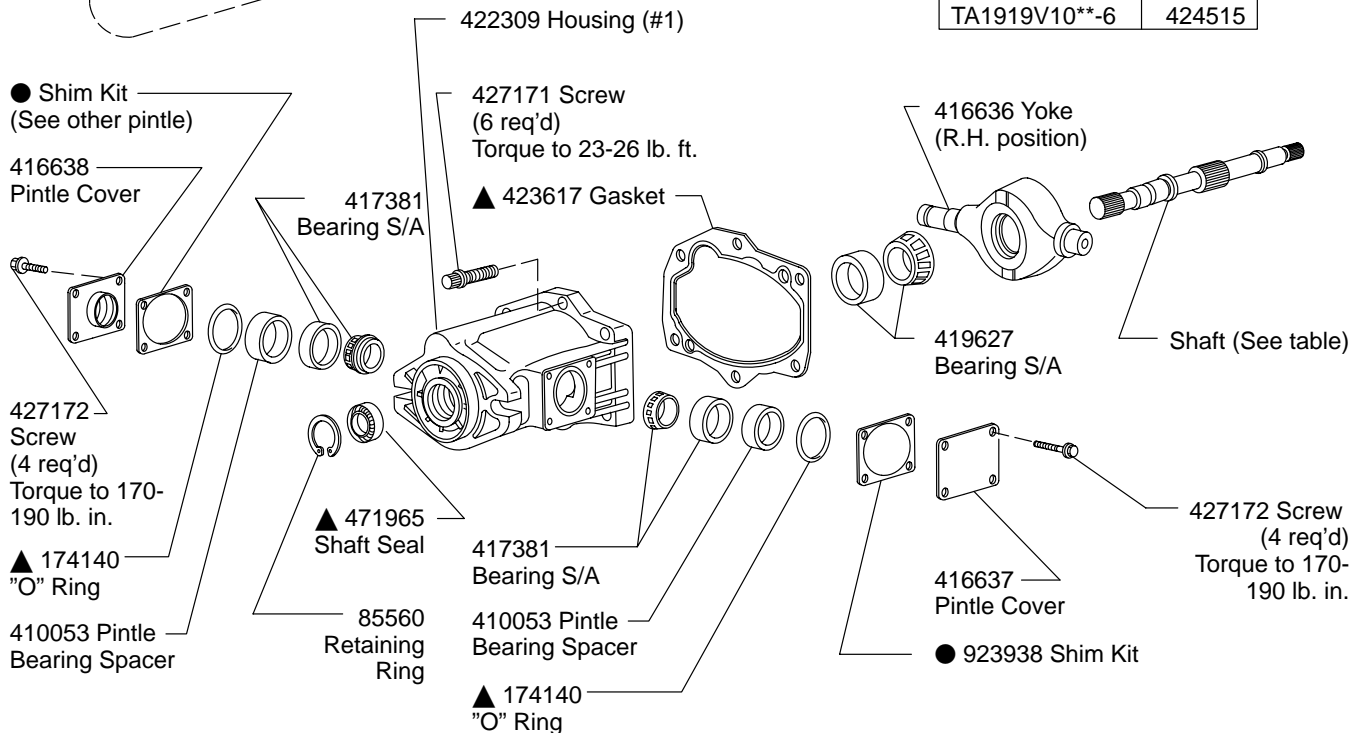


CAUTION

Replenishing Check/Relief and Replenishing Check Valves are used in any combination in this equipment. The combinations are determined by the application. Do no interchange valve positions or a major malfunction of the equipment may result.



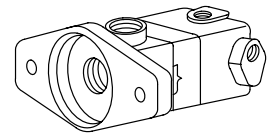
Model	Shaft
TA1919V10**-2	423416
TA1919V10**-6	424515



427172 Screw (4 req'd)
Torque to 170-190 lb. in.

▲ 174140 "O" Ring
410053 Pintle Bearing Spacer
417381 Bearing S/A

See Double Transmission Vane Pump exploded view shown on back page.



416637 Cover
● Shim Kit (See other pintle)

427171 Screw (6 req'd)
Torque to 23-26 lb. in.

417381 Bearing S/A
▲ 174140 "O" Ring
410053 Pintle Bearing Spacer
● 923938 Shim Kit

427172 Screw (4 req'd)
Torque to 170-190 lb. in.

416638 Pintle Cover

▲ 423617 Gasket

422309 Housing (#2)
199740 Screw (2 req'd)
Torque to 54-66 lb. ft.

427700 Washer (2 req'd)

Supercharge Inlet Port

7075 Plug (3 req'd)
Torque to 15-17 lb. ft.

■ 410050 Pin Retainer

■ 402580 Spherical Washer

■ 402650 Shoe Plate

■ 923939 Piston Shoe S/A Kit (Includes 9 Piston & Shoe S/A)

317697 Plug
Torque to 128-148 lb. ft.

■ 99907 Retaining Ring

▲ 154131 "O" Ring
424525 Spring (Color coded red)

■ 248810 Pin (3 req'd)

■ 423368 Spring Washer

■ 424526 Spring (Color coded green)

■ 426836 Cylinder Block

■ 404932 Spring Washer

942401 Bearing Spacer Kit (Chamfer toward shoulder of shaft)

424481 Wafer Plate R.H. (424492 Wafer Plate L.H. rotation)

473914 Bearing S/A
416650 Coupling

416645 Poppet

422303 Valve Block

Outlet Ports A1 & A2

Drain Port

Replenishing Check Only (See table)

416960 Spring (4 req'd) Color coded green

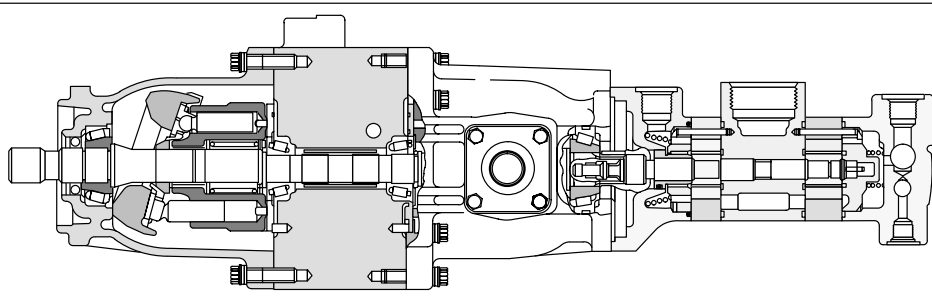
429325 Pin (4 req'd)
248910 Pin (2 req'd)
Replenishing Check and Relief Valve Only (See table)

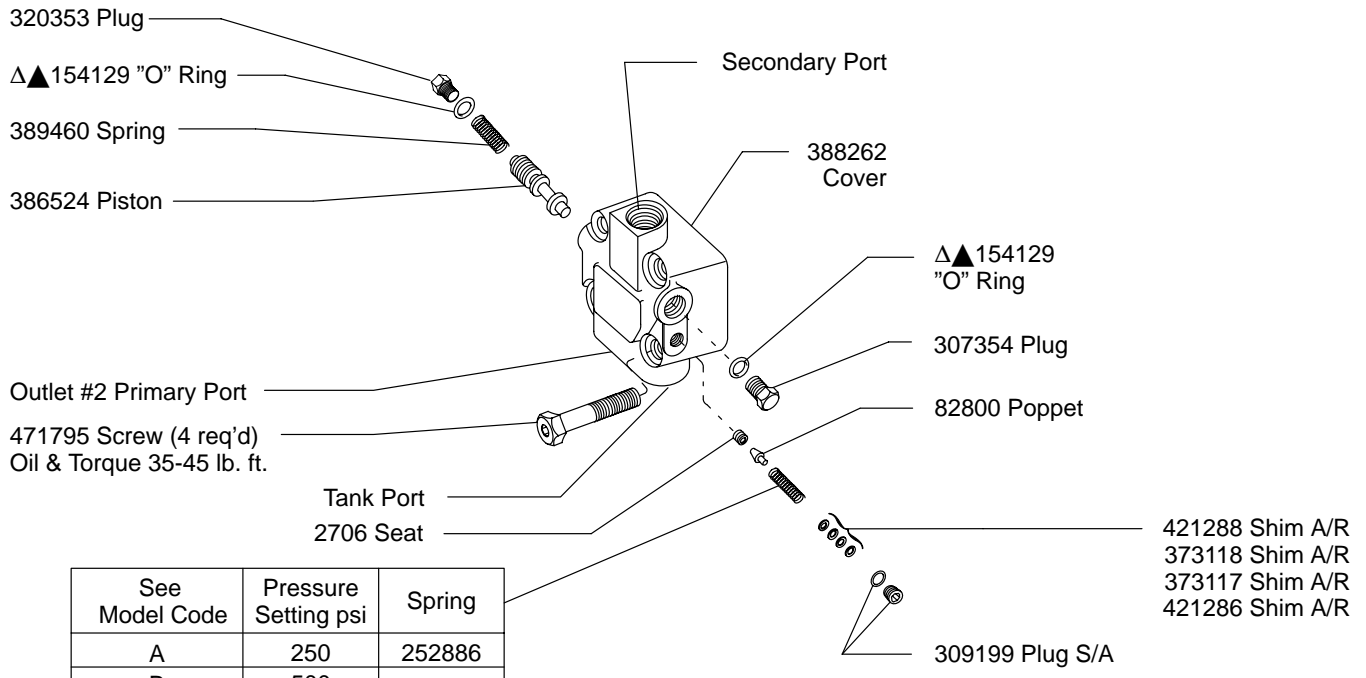
416602 Spring (4 req'd)

▲ 154131 "O" Ring (2 req'd)

416599 Plug
Torque to 128-148 lb. ft. (Use with Check & Relief)

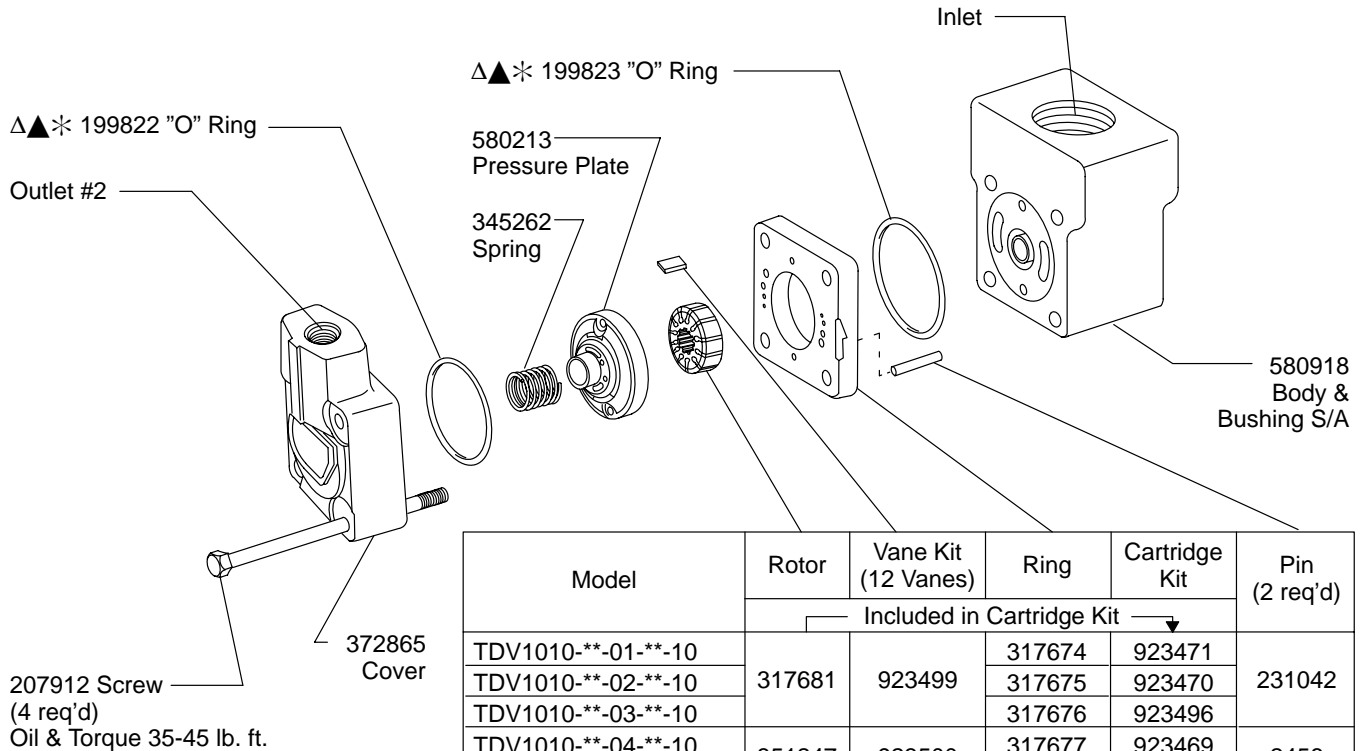
Model	Replenishing Check and Relief Valve Kit (2 req'd)	Replenishing Check (2 req'd)
TA1919V10-**-**R	942429 - 5000 psi	NONE
TA1919V10-**-001	942430 - 3500 psi	NONE
TA1919V10-**-**0	NONE	416645
TA1919V10-**-014	942428 - 3000 psi	NONE
TA1919V10-**-016	942427 - 4000 psi	NONE
TA1919V10-**-520	926472 - 5500 psi	NONE





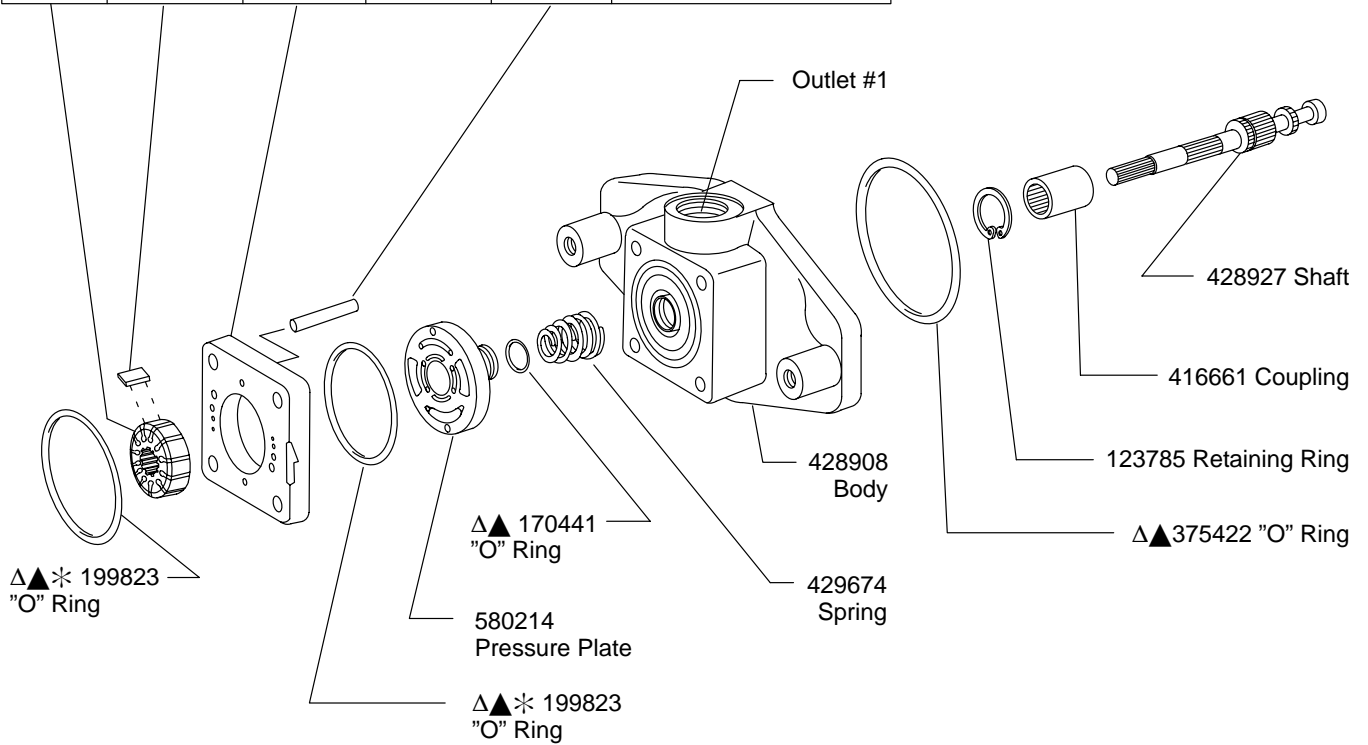
See Model Code	Pressure Setting psi	Spring
A	250	252886
B	500	2280
C	750	
D	1000	2282
E	1250	
F	1500	2281
G	1750	
H	2000	
J	2250	
K	2500	

Note
Use primary port for
Cover position



Model	Rotor	Vane Kit (12 Vanes)	Ring	Cartridge Kit	Pin (2 req'd)
			Included in Cartridge Kit →		
TDV1010-**-01**-10	317681	923499	317674	923471	231042
TDV1010-**-02**-10			317675	923470	
TDV1010-**-03**-10			317676	923496	
TDV1010-**-04**-10	351247	923500	317677	923469	2456
TDV1010-**-05**-10			317678	923468	
TDV1010-**-06**-10	357286	923501	355641	923497	16662
TDV1010-**-07**-10			331813	923498	

Rotor	Vane Kit (12 Vanes)	Ring	Cartridge Kit	Pin (2 req'd)	Model
Included in Cartridge Kit					
580224	923500	317677	941099	2456	TDV1010-04-**-**-10
		317678	941100		TDV1010-05-**-**-10
580215	923501	355641	941101	16662	TDV1010-06-**-**-10
		331813	941102		TDV1010-07-**-**-10



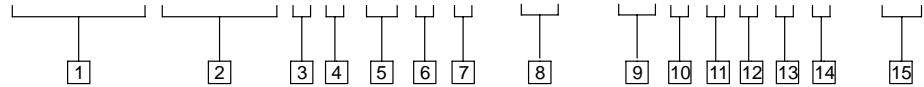
Thread Shaft into Intermediate Shaft until bottomed then back off 1/4 turn (approx. .020 gap). Install Coupling & 123785 Retaining Ring to hold Coupling in place.

△ Included in 920220 Seal Kit

* Also included in Cartridge Kit

Model Code

TA1919 V1010 * * -2 * * - * * - * * * * * * * - 21



1 Double Transmission Pump
Each rated @ 19 USgpm @1800 rpm

2 Auxiliary Vane Pump

3 Vane Pump Cover

P - Priority
Omitted - STD cover

4 Rotation
(Viewed from shaft end)

R - Right hand (CW)
L - Left hand (CCW)

5 Input Shaft
2 - SAE B-B Spline

6 Control Pintle
(Location viewed from shaft end w/drain port up.)

Code	Pump #1	Pump #2
A	RH side	RH side
B	LH side	RH side
C	RH side	LH side
D	LH side	LH side

7 Main Relief Valve

R - Relief valve
O - No relief valve

8 Shaft End Vane Pump Ring
(Capacity @ 1200 rpm)

04 - 4 USgpm	06 - 6 USgpm
05 - 5 USgpm	07 - 7 USgpm

9 Cover End Vane Pump Ring
(Capacity @ 1200 rpm)

01 - 1 USgpm	* 05 - 5 USgpm
02 - 2 USgpm	06 - 6 USgpm
03 - 3 USgpm	07 - 7 USgpm

* **04** - 4 USgpm
* "P" Cover

10 Vane Pump Outlet Port #1
(Position viewed from cover end)

A - In line with case drain
C - 180° Opposite case drain

11 Vane Pump Inlet Port
(Viewed from cover end)

A - Opposite outlet 1
B - 90° CCW from outlet
C - In line with outlet 1
D - 90° CW from outlet

12 Vane Pump Inlet Port #2
(Viewed from cover end)

A - Opposite inlet
B - 90° CCW from from inlet
C - In line with inlet
D - 90° CW from from inlet

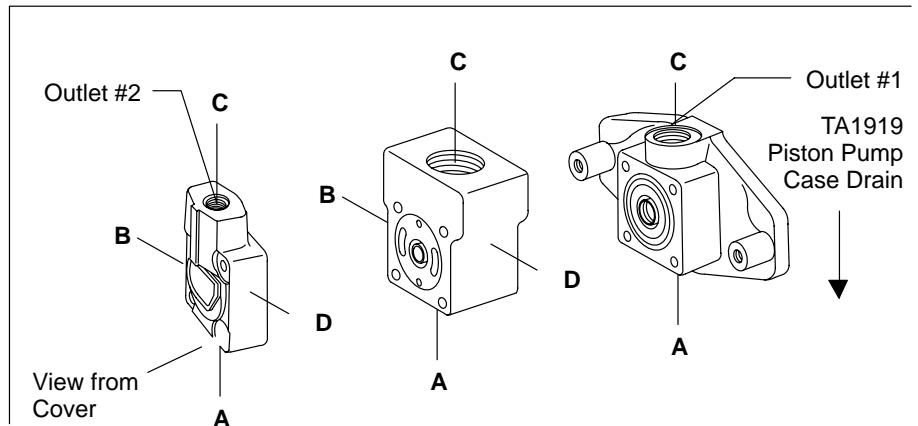
13 Flow Rate thru orifice "P"
(Located in the cover)

1, 2, 3, 4, 5, 6, or 7 USgpm

14 Cover End Vane Pump Relief Valve Setting
("P" cover only)

A - 250 psi	F - 1500 psi
B - 500 psi	G - 1750 psi
C - 750 psi	H - 2000 psi
D - 1000 psi	J - 2250 psi
E - 1250 psi	K - 2500 psi

15 Design



For satisfactory service life of these components in industrial applications, use full flow filtration to provide fluid which meets ISO cleanliness code 18/16/13 or cleaner. Selections from Eaton OFP, OFR, and OFRS series are recommended.